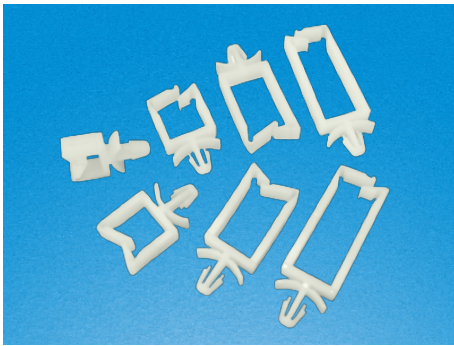


RCCN 日成KWS型马鞍型夹线套 (钩式) Locking Wires Adddle



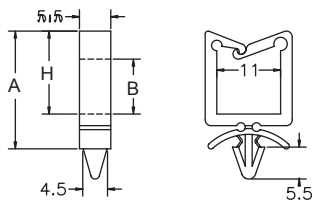
材质：UL合格之NYLON66(本色).
 防火等级：94V-2,不易老化,绝缘度高。
 用法：基板钻孔4.8mm,先把夹线套固定,再将欲固定之电线放入套中,
 从两侧轻轻一扣,即可将电
 线牢牢扣住,可作任何方向与角度的固定电线之用。

Material：UL approved NYLON66(natural).
 Fireproof: 94V-2 , good insulation, good aging resistant

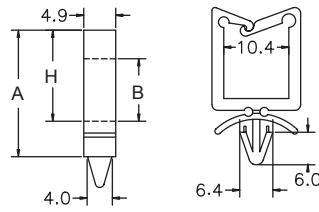
单位/Unit:mm

型号 Item No.	尺寸 Dimension						包装 Packing
	H	A	B	W			
KWS-0	9.0	13.0	4.0	11.0	4.8	2.0	100pcs (1000pcs)
KWS-1	14.2	19.0	10.5	11.0	4.8	2.0	
KWS-2	23.0	27.0	19.0	11.0	4.8	2.0	
KWS-2L	15.0	18.0	12.0	10.4	4.8	4.0	
KWS-3	31.1	35.8	28.0	11.0	4.8	2.0	
KWS-1522	如图				4.5	2.0	

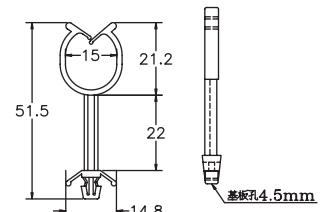
本品为老款：新款代替型号LWS系列/B94页
 this is old design, for new design,
 please check LWS series/page B94



KWS-0,1,2,3

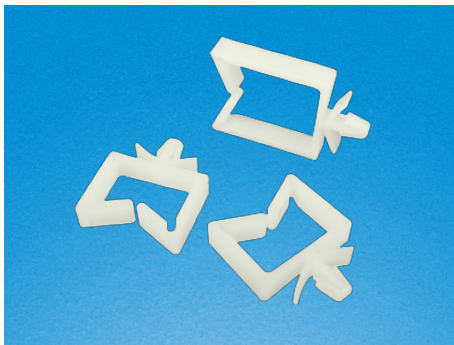


KWS-2L



KWS-1522

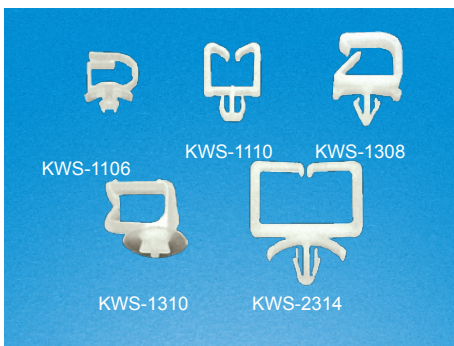
RCCN 日成KWSN型马鞍型夹线套 Locking wires addle



单位/Unit:mm

型号 Item No.	尺寸 Dimension						包装 Packing
	H	A	B	W	基板开孔 Panel hole	适用板厚 Suitable panel thickness	
KWS-0N	9.2	12.7	4.0	11.0	4.8	2.0	100pcs (1000pcs)
KWS-1N	11.4	17.9	8.6	11.0	4.8	2.0	
KWS-2N	23.4	26.9	18.2	11.0	4.8	2.0	
KWS-3N	31.3	34.8	26.2	11.0	4.8	2.0	
KWS-1114	17.8	21.2	13.7	10.7	4.8	2.4	

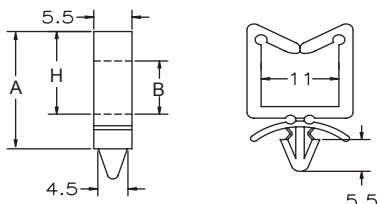
单位/Unit:mm



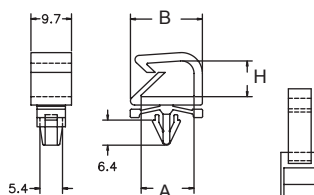
型号 Item No.	尺寸 Dimension					包装 Packing
	H	A	B	基板开孔 Panel hole	适用板厚 Suitable panel thickness	
KWS-0506	5.4	5.0	9.0	4.8	3.0	100pcs (1000pcs)
KWS-1106	5.4	10.5	13.0	4.8	1.6	
KWS-1110	9.8	10.9	14.4	如图	2.2	
KWS-1308	8.5	12.7	17.2	5.8	1.6	
KWS-1310	9.9	13.0	18.8	如图	如图	
KWS-2314	13.6	22.9	28.3	4.8	3.4	

本品为老款：新款代替型号NWS系列/B94页
 This is old design, for new design, Please check NWS
 series/page B94

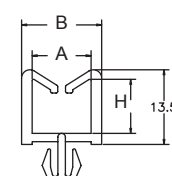
材质：UL合格之NYLON66(本色), 防火等级94V-2,不易老化,绝缘度高。
 Material：UL approved NYLON66(natural), fireproof 94V-2 , good insulation, good aging resistant



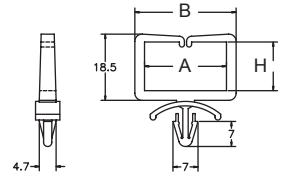
KWS-0,1,2,3N



KWS-1308



KWS-1110



KWS-2314